

Our Locations

Adams Morgan (Ward 1) (Headquarters)

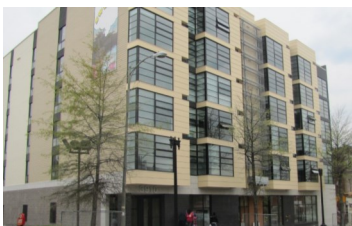
2333 Ontario Road, NW
Washington, DC 20009



Mary's Center operates **5** medical locations, **1** program office, senior wellness centers, and **1** Dental Cruiser. Altogether serve nearly 50,000 participants a year.

Petworth (Ward 4)

3912 Georgia Avenue, NW
Washington, DC 20011



Prince George's County

8908 Riggs Road
Adelphi, MD 20783



Fort Totten (Ward 5)

100 Gallatin Street, NE
Washington, DC 20011



Program Office

Healthy Start Program
(Home Visiting)

4304 Georgia Avenue, NW
Washington, DC 20011

Montgomery County

8709 Flower Avenue
Silver Spring, MD, 20901



Bernice Fonteneau Senior Wellness Center

3531 Georgia Avenue, NW
Washington, DC 20010

Free recreational services
for DC residents 60 +

New Location!

344 University Blvd. West
Silver Spring, MD 20901

Behavioral Health: Now Open

Medical and Social Services: Summer 2018

Dental: Early 2019



Hattie Holmes Senior Wellness Center

324 Kennedy Street, NW
Washington, DC 20011

Free recreational services
for DC residents 60 +



www.maryscenter.org
202-483-8196

Medical, Dental and Behavioral Health
Appointments:
1-844-796-2797

