

BUILDING HEALTHY COMMUNITIES

ACROSS



COMMUNITY HEALTH CENTERS ARE LOCATED IN AREAS WHERE CARE IS NEEDED BUT SCARCE.

WHO USES HEALTH CENTERS?

ACROSS THE NATION:

24 million patients
nearly **300** thousand veterans
over **7** million children

HORIZON HEALTH CARE:

over **26** thousand patients
over **1,100** veterans • over **8,700** children
52% are covered by Medicaid or are uninsured

HORIZON OPERATES WITH 32 CLINICS IN 22 COMMUNITIES AND A NEARLY 28,000 MILE FOOTPRINT ACROSS SOUTH DAKOTA

WHAT MAKES HEALTH CENTERS DIFFERENT?

more night and weekend hours



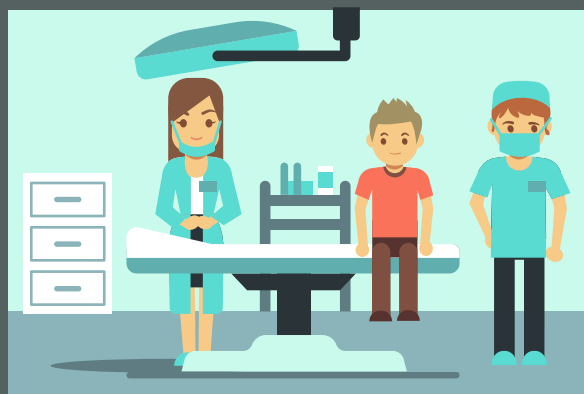
more services under one roof



more likely to accept new patients and open to all



community governed



HOW DO HEALTH CENTERS COMPARE WITH OTHER PROVIDERS?



lower costs of care

more preventive services



higher patient satisfaction

higher rates of controlled hypertension



reduced rates of low birth weight

CARING FOR YOUR community

WITH A BROAD ARRAY OF
SERVICES



MEDICAL
CARE



DENTAL



BEHAVIORAL
HEALTH



LOWERS COSTS

HEALTH CENTERS SAVE **\$1,263**
PER PATIENT PER YEAR

✓ QUALITY

HEALTH CENTERS PERFORM JUST AS
WELL OR BETTER THAN PRIVATE
PRACTICE PHYSICIANS ON **94%**
OF QUALITY MEASURES

HEALTH CENTER PATIENTS HAVE:

(COMPARED WITH NON-HEALTH CENTER PATIENTS)



18%

LOWER RATES OF EMERGENCY
DEPARTMENT VISITS



64%

LOWER RATES OF MULTI-DAY
HOSPITAL ADMISSION



1/4

OF TOTAL HOSPITAL INPATIENT
BED DAYS