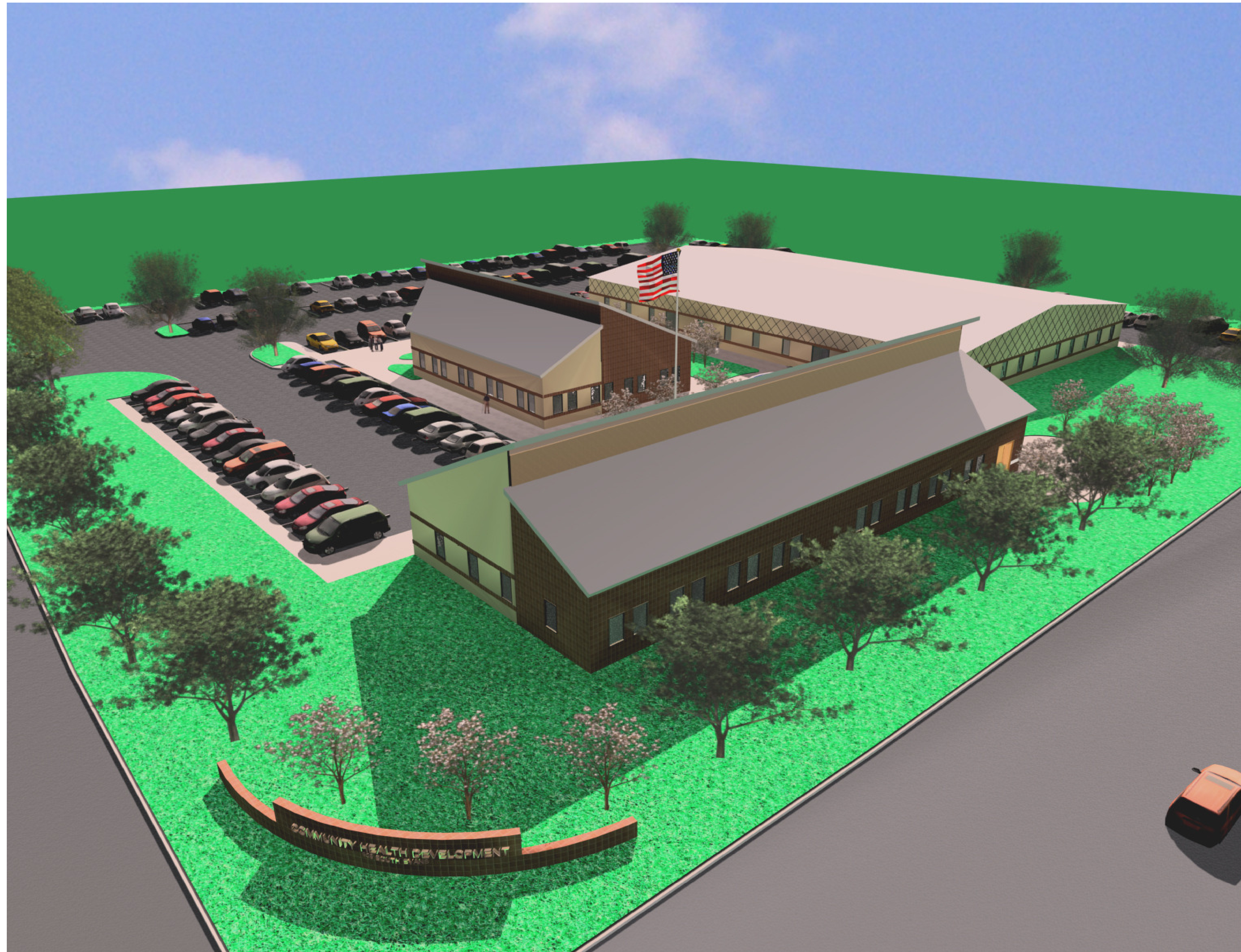




*Community  
Health Development, Inc.*  
*The Heart of the Community*

**Chesney  
Morales ARCHITECTS/PLANNERS  
& Associates, Inc.**



THIS DOCUMENT IS INCOMPLETE AND IS NOT TO BE USED  
FOR REGULATORY, APPROVAL, PERMIT, OR CONSTRUCTION  
CHESNEY MORALES & ASSOCIATES, INC.  
RICHARD G. MORALES TEXAS REG. 5106